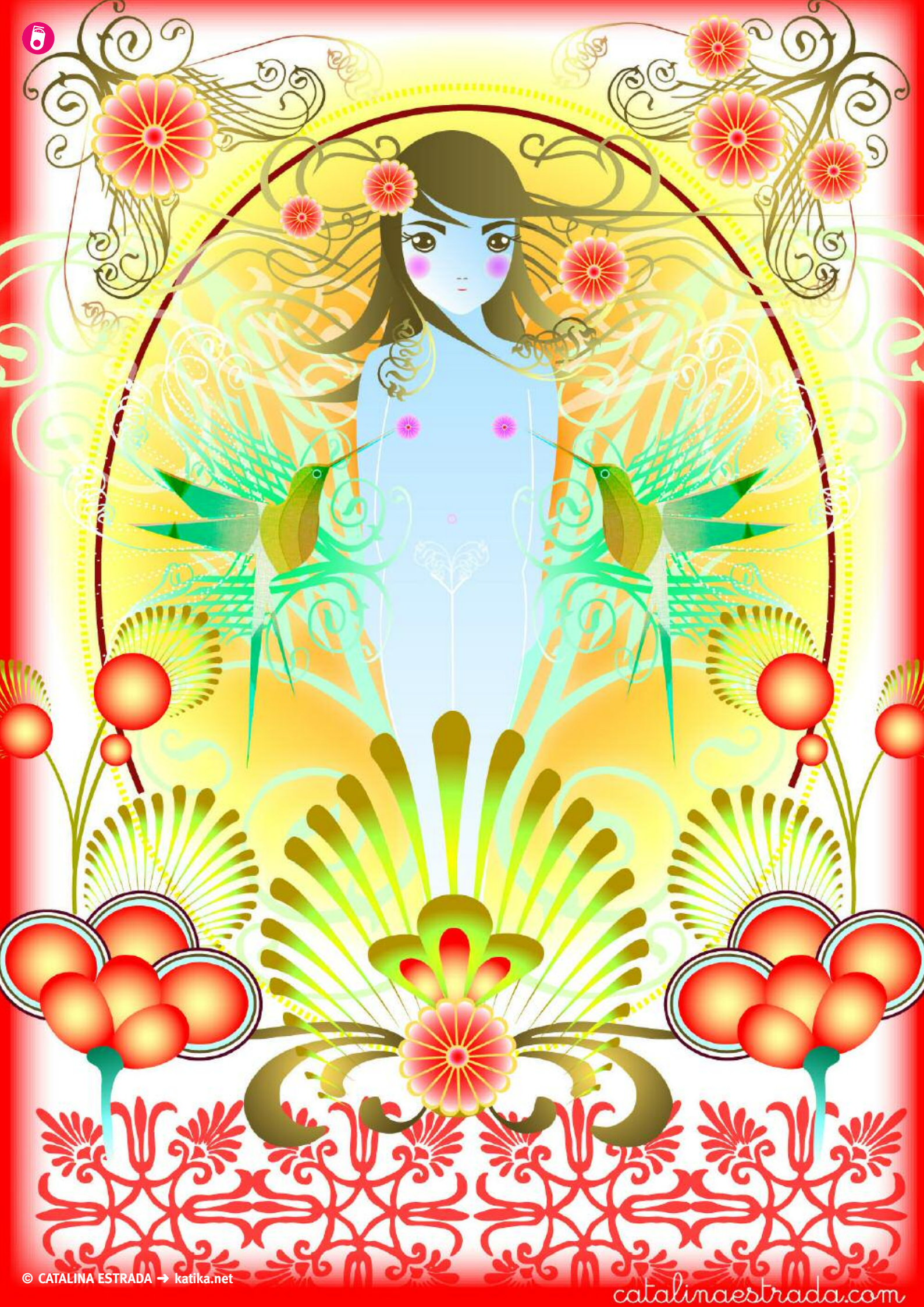
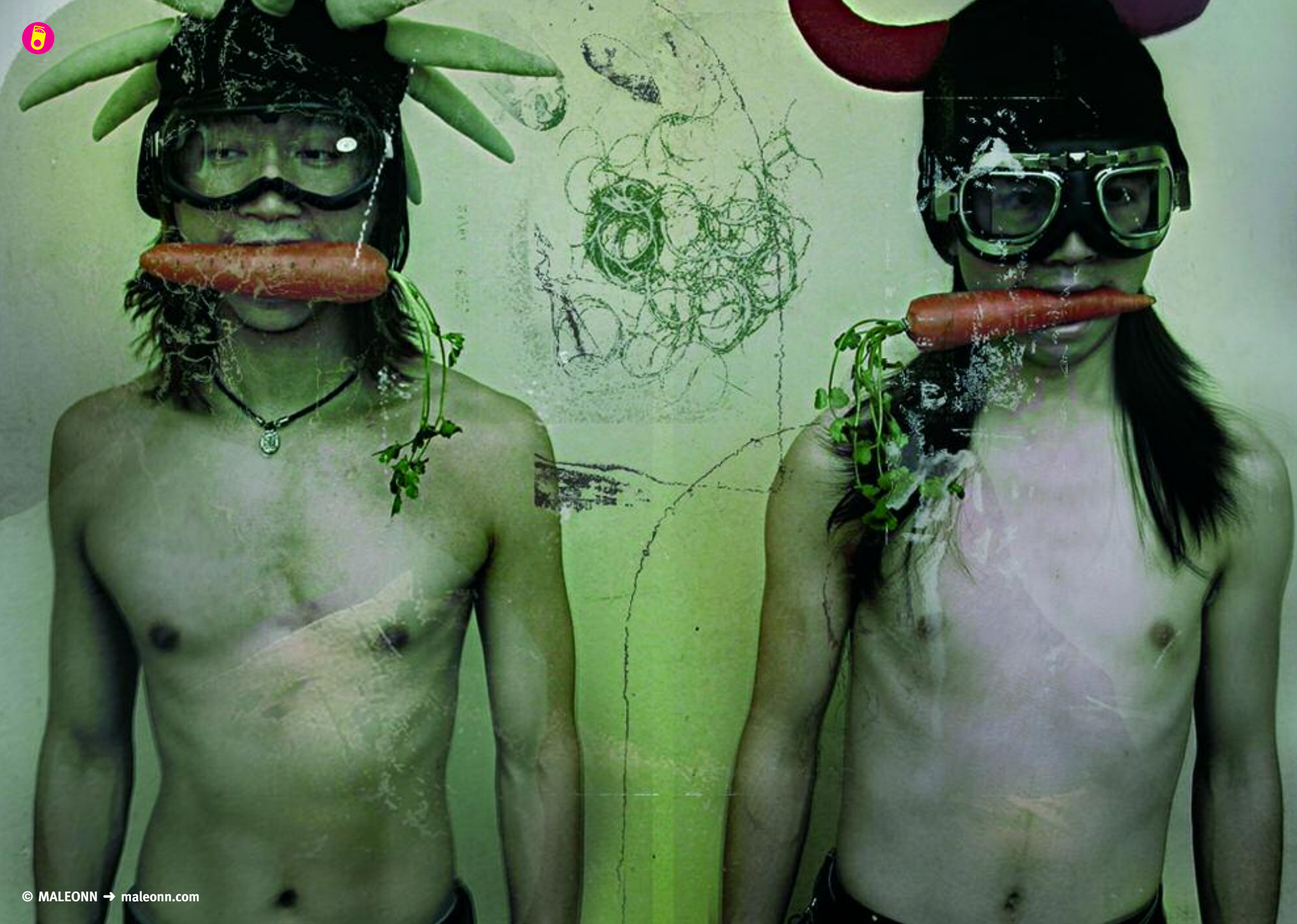


[illegible][illegible][illegible][illegible][illegible][illegible][illegible][illegible][illegible][illegible]

risposta: con grato a tutti pernacchiate dalle
risposta: del Pesci, sono più che auspici: inizi-
non pianificate, comportamenti disordinati,
ambienti domestici caotici e progetti senza capo
è codà (frutto portafortuna: melograno).

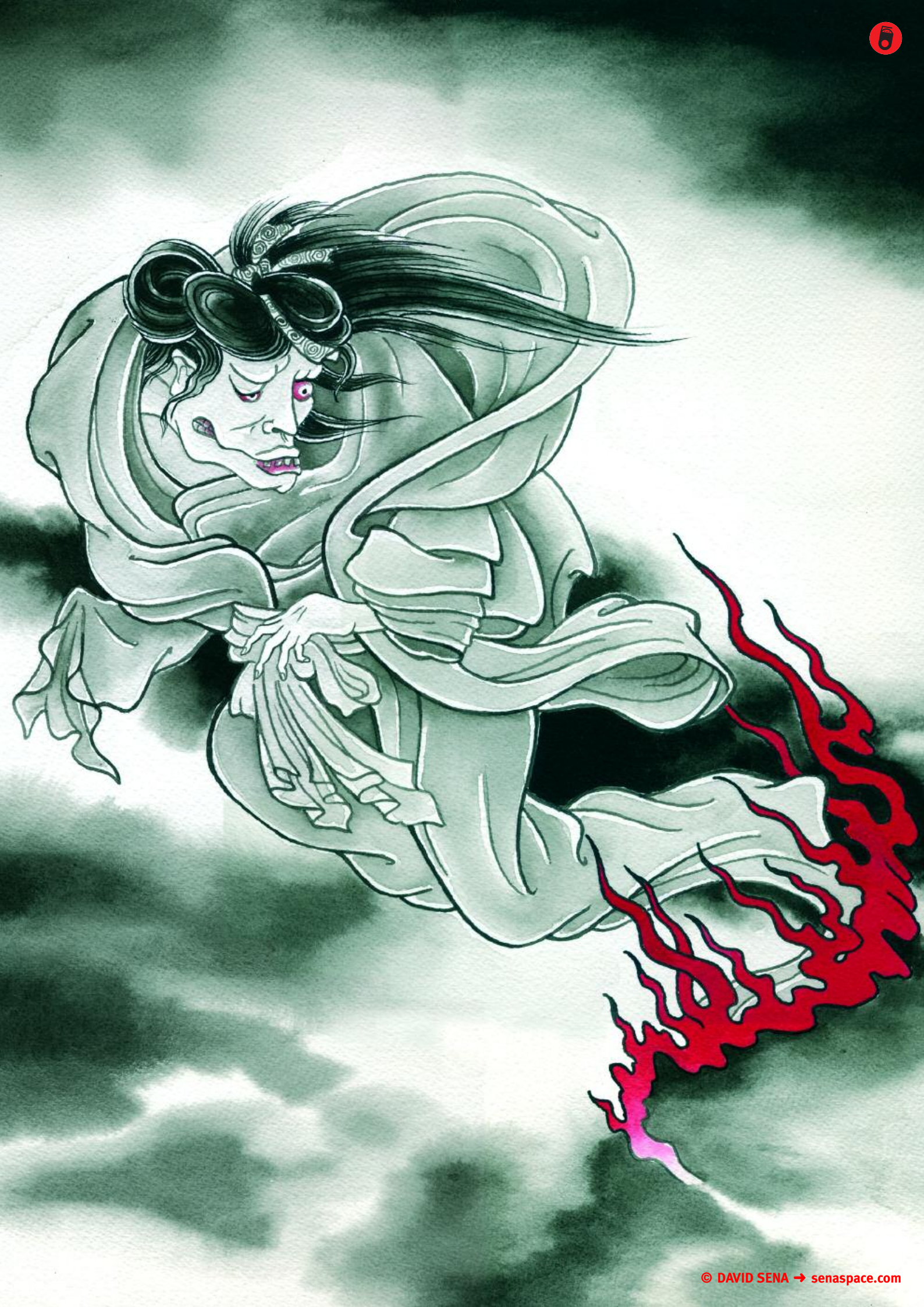


















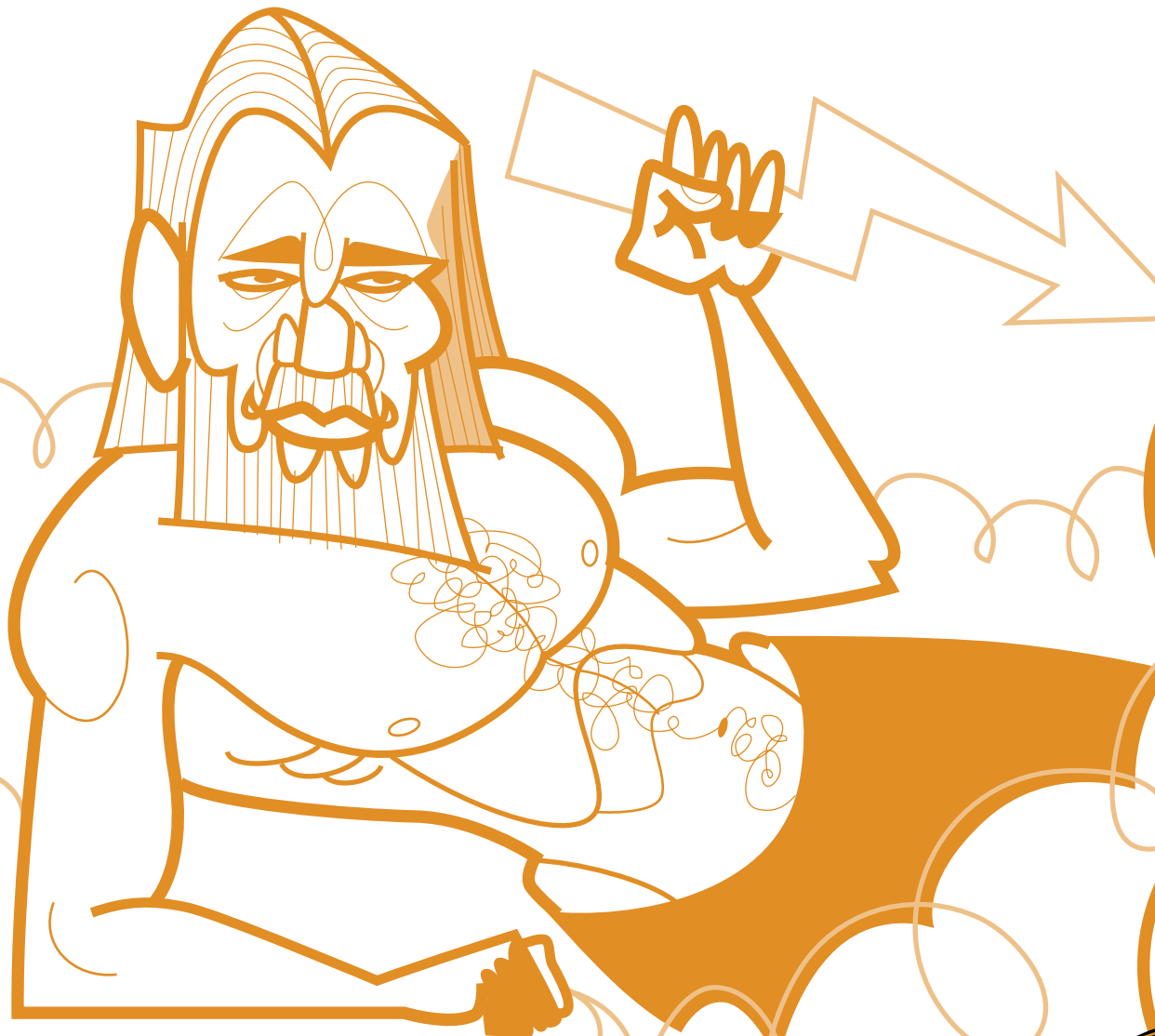












MYTHOLOGICAL HOROSCOPE